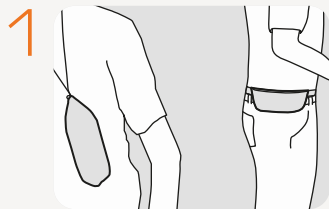
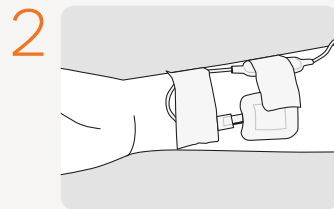


# Troubleshooting

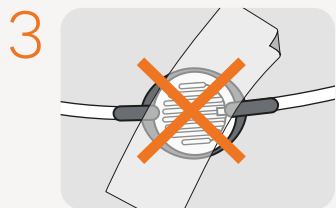
- ▶ **If medication is not flowing**, check that IV line is unclamped and that tubing isn't kinked.
- ▶ **If you notice liquid within the container**, outside of the Balloon contact your healthcare provider.
- ▶ **If any part of the pump is broken**, clamp your line as directed and contact your healthcare provider.
- ▶ **If fluid leaks on your skin**, immediately wash with water and contact your healthcare provider.



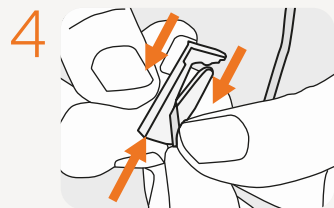
Carry the Container close to your body.



Keep the capillary Device in contact with the skin.



Do not cover the filter. Keep it dry and clean.



To stop the infusion, clamp the line by sliding the tube into the narrow part of the Clamp.

PL-259000367-1v05 11-2023



[dosi-fuser.com](https://dosi-fuser.com)

**leventon**  
a werfen company

# DOSI-FUSER®

## Patient Guidelines

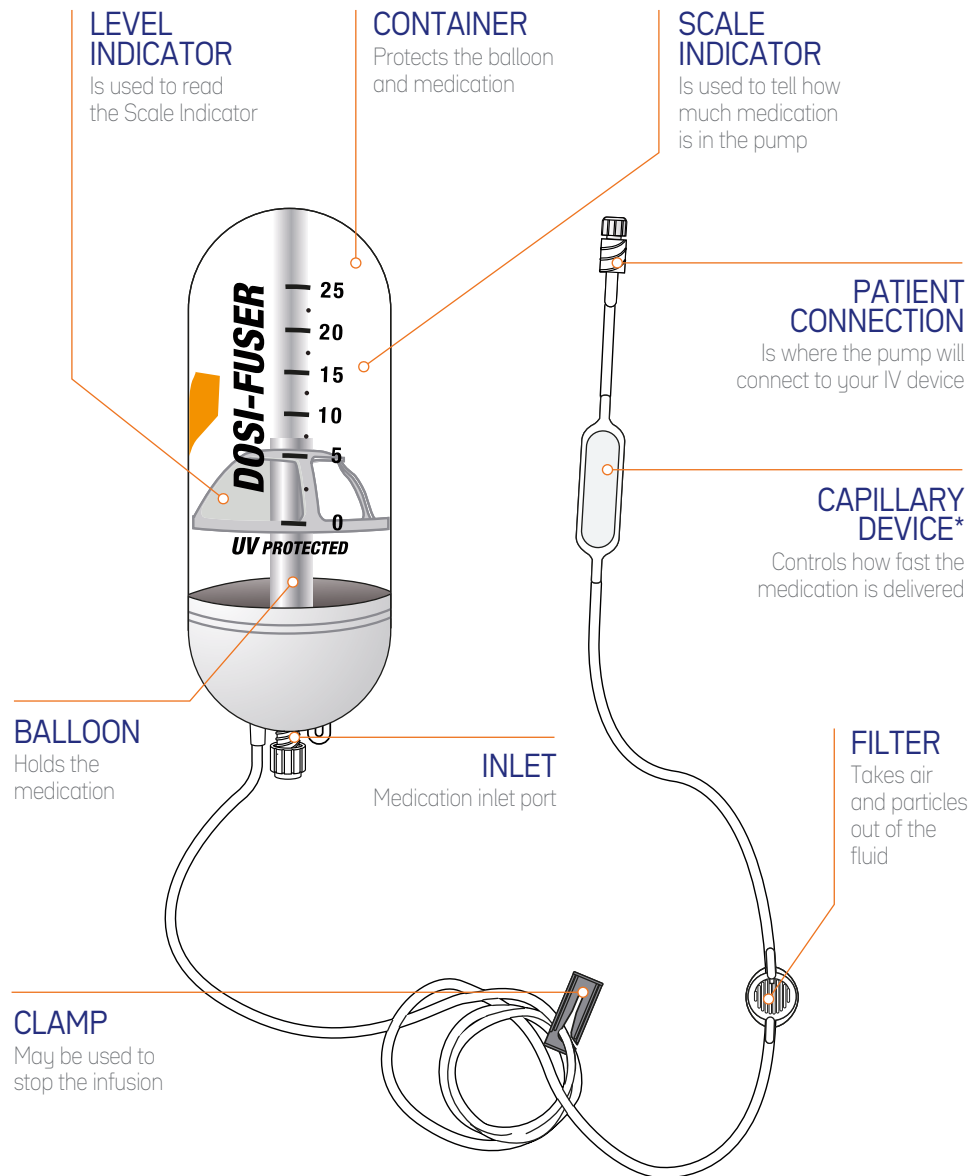


- ▶ Your nurse will start the infusion and tell you how long it will take for the medication to go into your body.
- ▶ You will notice the Balloon deflating and getting smaller as the infusion progresses.
- ▶ You will see the Level Indicator gradually going down the scale as the Balloon deflates.
- ▶ At the end of the infusion the Level Indicator will be at 0 (zero) or close to, on the scale.

## How does the DOSI-FUSER® work?

- 1 This pump has a Balloon inside a rigid Container. The Balloon holds your prescribed medication under pressure. The Pump should be worn between the upper-chest and the waist as instructed by your healthcare provider.
- 2 An infusion line is connected to your catheter to deliver the medication to you. The line has a Clamp, a Filter and a Capillary Device to control the flow rate. The Capillary Device must be attached to your skin at all times, in the location and method instructed by your nurse.

# INDIVIDUAL PART DESCRIPTIONS



\*Some models feature a restrictor tube instead of a capillary device.

# General Guidelines

## Sleeping

- ▶ Place your DOSI-FUSER® in any location at your level.
- ▶ Do not hang from a bed post or IV pole.
- ▶ Do not leave it on the floor.

## Washing

- ▶ The Capillary Device does not require washing, but if you do wash it, use water only.
- ▶ Do not use alcohol or other solvents for this purpose.

## Shower / Bath

- ▶ If you have to take a shower/bath, protect your DOSI-FUSER® from direct water streams.
- ▶ In particular, ensure that the filter hole on the line is protected from water, as it could block the air elimination membrane.

## Exercise

- ▶ You may exercise with DOSI-FUSER®, however consider the following:
  - ▶ The height of the container.
  - ▶ The temperature.
  - ▶ Do not wet the filter on the line.
  - ▶ Do not let the product fall.

## Temperature

- ▶ Do not expose the container to extreme temperature.
- ▶ Protect the container from cold temperatures by carrying it under your clothes.
- ▶ Protect it from direct heat.
- ▶ Keep the Capillary Device in contact with the skin at 32 °C / 89.6 °F.

## Traveling

- ▶ You could travel by plane with your DOSI-FUSER®.